



PLANATE

MANAGEMENT GROUP AFRICA LTD.

AFRICA & MIDDLE EAST

CAPABILITY STATEMENT

COMPANY OVERVIEW

- ▶ **18 years of excellence** since 2007 in delivering high-quality facilities management and support operations services worldwide as both a prime and sub-consultant.
- ▶ Headquartered in Alexandria, Virginia, with 9 satellite offices worldwide: Washington, Florida, Philippines, Kenya, Ukraine, Taiwan, Guam, Thailand and Papua New Guinea.
- ▶ A **robust team** of over 350 professionals worldwide.
- ▶ Successfully executed projects in **24 US states and 25 countries** across five continents.
- ▶ Expertise in managing and executing multi-disciplinary projects, including **Architecture & Engineering, Facilities Planning, and Engineering Support.**
- ▶ **Expanding capabilities** in CBRNe Mailroom Design, Commissioning, and Training.
- ▶ Offering **24/7** on-site and reach-back support.

HIGHLIGHT SERVICES

CONSTRUCTION MANAGEMENT SUPPORT

- ▶ Project planning and scheduling
- ▶ Cost estimating and budget control
- ▶ Quality assurance and quality control
- ▶ Risk management and mitigation
- ▶ Contractor coordination and supervision

CIVIL & STRUCTURAL ENGINEERING CAPABILITIES

- ▶ Infrastructure design: land development, grading, drainage, water & wastewater systems, stormwater management, road-way design, site utilities
- ▶ Structural system design (steel, concrete, timber, masonry)
- ▶ Analysis and modeling for vertical and horizontal loads
- ▶ Peer review and value engineering
- ▶ Code compliance (ACI, AISC, Eurocode, BS, local standards)
- ▶ Construction documentation and detailing
- ▶ Site inspections and contractor coordination
- ▶ Shop drawing and submittal reviews
- ▶ QA/QC review of structural installations
- ▶ Project close-out and as-built reconciliation
- ▶ Sustainable infrastructure planning and design
- ▶ Resilient design for climate and disaster adaptation
- ▶ Advanced structural modeling (ETABS, SAP2000, STAAD.Pro)
- ▶ Lifecycle cost analysis and structural optimization

CRITICAL POWER SYSTEMS

- ▶ Uninterruptible Power Supply (UPS) configuration, sizing, and integration
- ▶ Emergency and standby generator systems
- ▶ Electrical resilience modeling and fault tolerance planning
- ▶ Load segmentation and prioritization strategies
- ▶ Power quality analysis and mitigation
- ▶ Risk assessment for single-point failures
- ▶ Energy planning and optimization
- ▶ Installation supervision and QA/QC inspection
- ▶ Redundancy and failover performance testing
- ▶ Functional testing, commissioning, and maintenance planning
- ▶ Renewable backup and hybrid power systems

GIS ENGINEERING CAPABILITIES

- ▶ High-resolution mapping and spatial data management
- ▶ Cadastral and topographic digitization
- ▶ Real-time GPS and mobile field data integration
- ▶ Georeferencing and coordinate transformation
- ▶ Spatial analysis for infrastructure planning and asset management
- ▶ Environmental sensitivity mapping and impact assessment
- ▶ Risk and vulnerability assessment
- ▶ Site selection and suitability modeling
- ▶ Alignment studies (roads, pipelines, transmission lines)
- ▶ As-built drawings and infrastructure inventory
- ▶ GIS-enabled construction progress monitoring
- ▶ Open-source and commercial GIS tools (ArcGIS, QGIS, GeoServer)
- ▶ Drone and satellite imagery processing for change detection
- ▶ 3D terrain modeling and visualization
- ▶ Interactive web GIS portals and dashboards

MECHANICAL, ELECTRICAL & FIRE PROTECTION (MEP/FP)

ELECTRICAL

- ▶ Electrical system design (government, residential, commercial, industrial)
- ▶ Power distribution systems (medium and low voltage)
- ▶ Lighting design and control systems
- ▶ Renewable energy system integration (solar)
- ▶ Fire alarm and life safety systems
- ▶ Low-voltage systems (CCTV, access control, intercom)
- ▶ Load flow analysis, short circuit studies, arc analysis
- ▶ Equipment selection and specifications
- ▶ Voltage drop calculations
- ▶ Procurement and vendor evaluation
- ▶ Installation supervision and commissioning
- ▶ BIM modeling and CAD drafting
- ▶ Code compliance (NEC, IEC, IEEE)
- ▶ Smart grid and smart building technologies
- ▶ EV charging infrastructure design
- ▶ Microgrid and battery storage systems
- ▶ IoT-enabled electrical systems

MECHANICAL

- ▶ HVAC system design
- ▶ Plumbing and drainage system engineering
- ▶ Fire protection system layout and performance
- ▶ Equipment sizing, selection, and layout planning
- ▶ 3D modeling and simulation (AutoCAD, Revit, SolidWorks, Inventor)
- ▶ Thermal load calculations and energy modeling
- ▶ CFD simulations
- ▶ LEED and green building design compliance
- ▶ Shop drawing reviews and submittal approvals
- ▶ Construction documentation and support
- ▶ Site inspections and contractor coordination
- ▶ Test compliance with ASHRAE, SMACNA, NFPA, ISO
- ▶ Building automation and control systems integration
- ▶ Energy retrofitting and sustainability upgrades

FIRE PROTECTION

- ▶ Fire suppression system design (sprinklers, clean agents, foam, deluge)
- ▶ Fire alarm and detection system design
- ▶ Integration with building automation systems
- ▶ Fire hazard analysis and risk assessment
- ▶ Compliance with NFPA, BS, IFC, and local codes
- ▶ Performance-based fire safety engineering solutions
- ▶ IoT and smart sensor integration for early detection
- ▶ Critical facility fire protection (e.g., data centers)

WATER ENGINEERING

- ▶ Water quality monitoring and treatment process optimization
- ▶ Wastewater and sewage treatment plant engineering
- ▶ Irrigation networks and agricultural distribution systems
- ▶ Energy-water nexus optimization
- ▶ Preventive maintenance and customer support
- ▶ Compliance with WHO, ISO, and local standards
- ▶ Smart metering and remote monitoring solutions



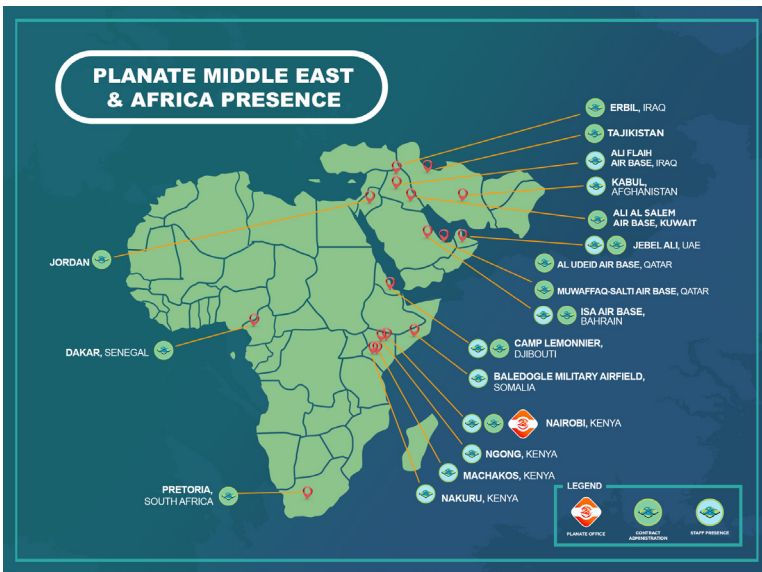
ACCESSING PLANATE

MULTIPLE AWARD PRIME CONTRACT VEHICLES

- ▶ Seaport NexGen: N0017819D8303
- ▶ GSA Professional Services Contract: GS23F058AA
- ▶ USACE Honolulu District Indefinite Delivery Architect- Engineer Services Contract Construction Management (CM) Services: W9128A21D0008
- ▶ NAVFAC Marianas Guam Construction Management (CM) Services Contract: N 40192-16-D-0008
- ▶ NAVFAC EXWC Architect Engineer and Design Services for Energy Efficiency Projects and Services
- ▶ DOS Overseas Building Operations Engineering Services IDIQ – 19AQMM21D0148
- ▶ VISN 5 IDIQ, VISN 17 BPA VISN 20 IDIQ MATOC

SUB CONTRACT VEHICLES

- ▶ US ARMY Logistics Civil Augmentation Program IV & V (LOGCAP IV & V)
- ▶ US Air Force Contract Augmentation Program IV (AFCAP IV)
- ▶ US Air Force Civil Engineering Center AE NEXT (AFCEC AE NEXT)
- ▶ DTRA Chemical, Biological, Radiological and Nuclear Preparedness Program (CP2)
- ▶ NAVFAC Navy Support Facility Diego Garcia, BIOT (DB MACC)
- ▶ NAVFAC NSGB Base Operation Support Services
- ▶ NAVFAC Naval Support Activity Base Operation Support Services (NSA BOSS)
- ▶ DoS Diplomatic Platform Support Services (DiPSS) Large Business
- ▶ NAVFAC Expeditionary Program Office Support Services (EXPO)
- ▶ USAID Architecture & Engineering III IDIQ (AE III IDIQ)
- ▶ USAID Monitoring Evaluation and Learning IDIQ (EVAL ME II)
- ▶ USACE Multi-Discipline AE IDIQ Alaska
- ▶ NAVFAC FE DB DBB MACC US Navy Support Facility Diego Garcia, BIOT



PAST PERFORMANCES



Construction Management Support – NAVFAC, Camp Lemonnier, Djibouti

Provided ongoing construction management and infrastructure support to NAVFAC EURAFSWA. Delivered contractor oversight, QA/QC, and preventive maintenance for renovations and new construction. Projects included power plant switchgear expansion, fire protection, HVAC upgrades, reverse osmosis systems, and street lighting improvements to enhance operational readiness and facility safety.

A&E and Construction Observation Support – DTRA FALCON, Bishoftu, Ethiopia

Provided A&E observation services under the \$4.9M BTRP FALCON program. Scope included construction monitoring, daily documentation, reach-back technical expertise, code compliance, QA inspections, commissioning, and milestone verification to support the African Union's Pan African Veterinary Vaccine Production Center (AU-PANVAC).

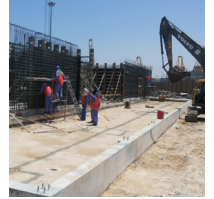


Planning and Support Services – US Army LOGCAP IV, Afghanistan

Delivered engineering, design, and construction services across multiple bases. Scope included fire protection assessments, electrical and HVAC design, landfill planning, and structural evaluations. Conducted water vulnerability studies, ensured compliance with UFC, NFPA, IBC, and DoD standards, and enhanced resilience, safety, and efficiency of military infrastructure operations.

Construction & Design Management Support – NAVFAC EURAFSWA, Jebel Ali, UAE

Provided CM and DM support for military infrastructure projects at Jebel Ali Quay 9. Oversaw QA/QC, safety enforcement, schedule and cost analysis, and dispute resolution. Delivered design review, documentation, and compliance support. Licensed engineers with clearances ensured secure, high-quality execution in a complex overseas military environment.



NAICS CODES

- | | | |
|---|--|---|
| 541330 – Engineering Services | 541990 – All Other Professional Scientific, and Technical Services | 237990 – Other Heavy and Civil Engineering Construction |
| 561210 – Facilities Support Services | 541513 – Computer Facilities Management Services | 238210 – Electrical Contractors and Other Wiring Installation Contractors |
| 541620 – Environmental Consulting Services | 236220 – Commercial and Institutional Building Construction | 237130 – Power and Communication Line and Related Structures Construction |
| 541611 – Administrative Management and General Management Consulting Services | 236210 – Industrial Building Construction | 335313 – Switchgear and switchboard apparatus manufacturing |
| 541618 – Other Management Consulting Services | 562910 – Remediation Services | |
| 561499 – All Other Business Support Services | 237110 – Water and Sewer Line and Related Structures Construction | |

OFFICE LOCATIONS

ALEXANDRIA
1800 Diagonal Road, Suite 600, Alexandria VA, 22314

UKRAINE
7 Volodymyrska St, Ste 1, Kyiv 01001, Ukraine

KENYA
Waiyaki Way- Red Hill Link Road Nyari South Estate, Ngecha Road, House No. 28

PLANATE MANAGEMENT GROUP

A Service-Disabled Veteran-Owned Small Business

- 📍 1800 Diagonal Road, Suite 600, Alexandria, VA 22314
- 🌐 www.planate.com
- ✉ bdsupport@planate.com
- 📞 (703) 232 - 1491
- 📠 Fax: (866) 844 - 4373

POINT OF CONTACT

REESE MANGARAN, CCMP
Head of Business Development & Capture
reese.mangan@planate.com
+1-703-719-4009

MERCY NDIRANGU, M-PRSK, MCIPR
Business Support Group Head / Country Manager PMG-AFL
mercy.ndirangu@planate.com
+25-471-677-5128

IVY CHEBET CHEPTUMO
Capture Lead Coordinator
ivy.cheptumo@planate.com

GILBERT MUTAI
Chief Engineer
gilbert.mutai@planate.com
072275-0068

